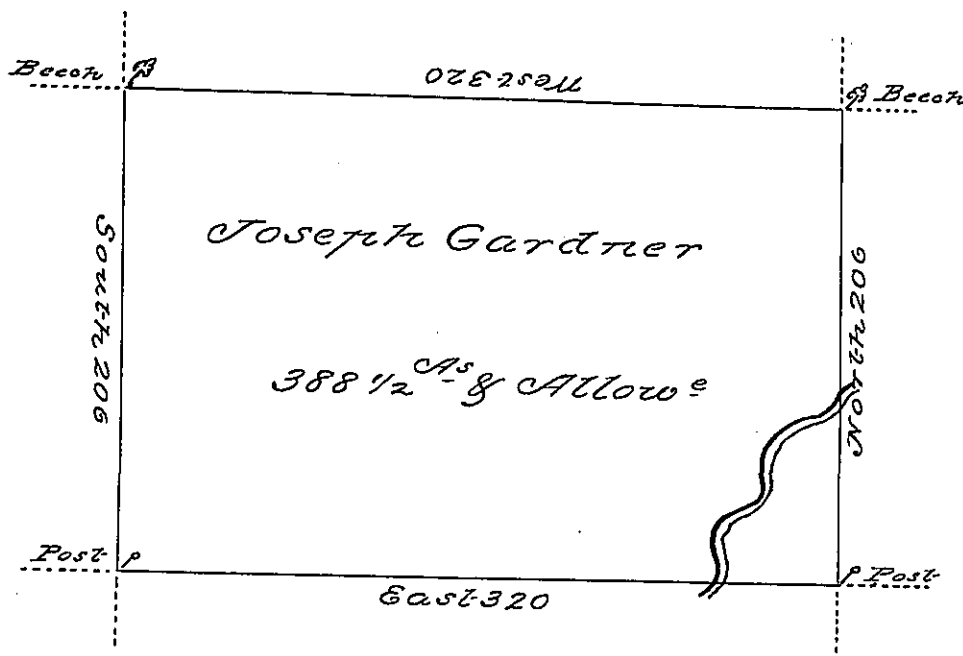


A-28-296

David Sickle
A-28-298

C-104-241

Robt Smith
A-28-300



Thos Smith
A-28-297

C-63-31

Joseph James
A-78-221

A-74-70

A Draught of a tract of land Called _____
 Situate on the Water of Wydusing Creek
 joining Land surveyed for David Sickle & others
 in Luzerne (formerly North^d) County - Con-
 taining three hundred & eighty eight Acres
 1/2 & Allowance of six 1/2 Cent for roads &c Surveyed
 for Joseph Gardner the 30th Day of August
 1787 in pursuance of a warrant Dated the
 27th Day of July 1787 - by
 Wm Gray D.C.

To John Lukens Esq. }
 Supt. Gen. }

IN TESTIMONY that the above is a copy of the original remaining on file in the
 Department of Internal Affairs of Pennsylvania, made con-
 formably to an Act of Assembly approved the 16th day of
 February, 1833, I have hereunto set my Hand and caused
 the Seal of said Department to be affixed at Harrisburg, this

second day of March 1897

James W Latta
 Secretary of Internal Affairs.